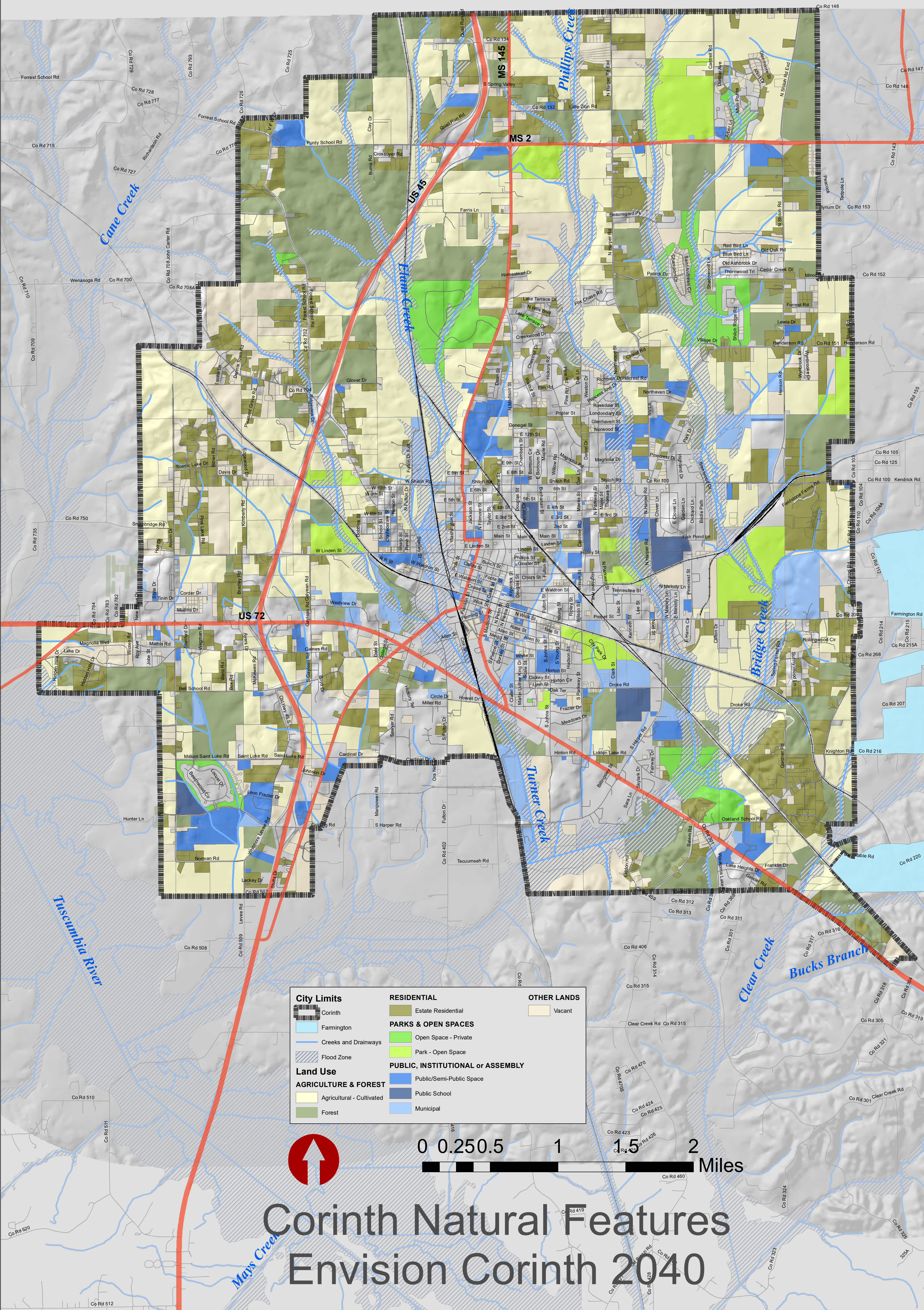


# Tennessee



City Limits	RESIDENTIAL	OTHER LANDS
Corinth	Estate Residential	Vacant
Farmington	<b>PARKS &amp; OPEN SPACES</b>	
Creeks and Drainways	Open Space - Private	
Flood Zone	Park - Open Space	
	<b>PUBLIC, INSTITUTIONAL or ASSEMBLY</b>	
	Public/Semi-Public Space	
	Public School	
	Municipal	
	<b>AGRICULTURE &amp; FOREST</b>	
	Agricultural - Cultivated	
	Forest	



0 0.25 0.5 1 1.5 2 Miles

## Corinth Natural Features Envision Corinth 2040